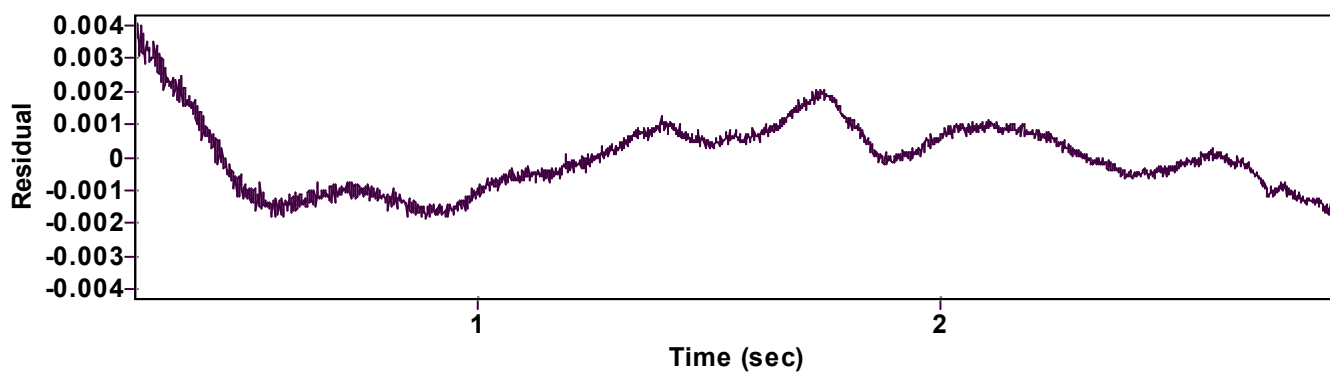
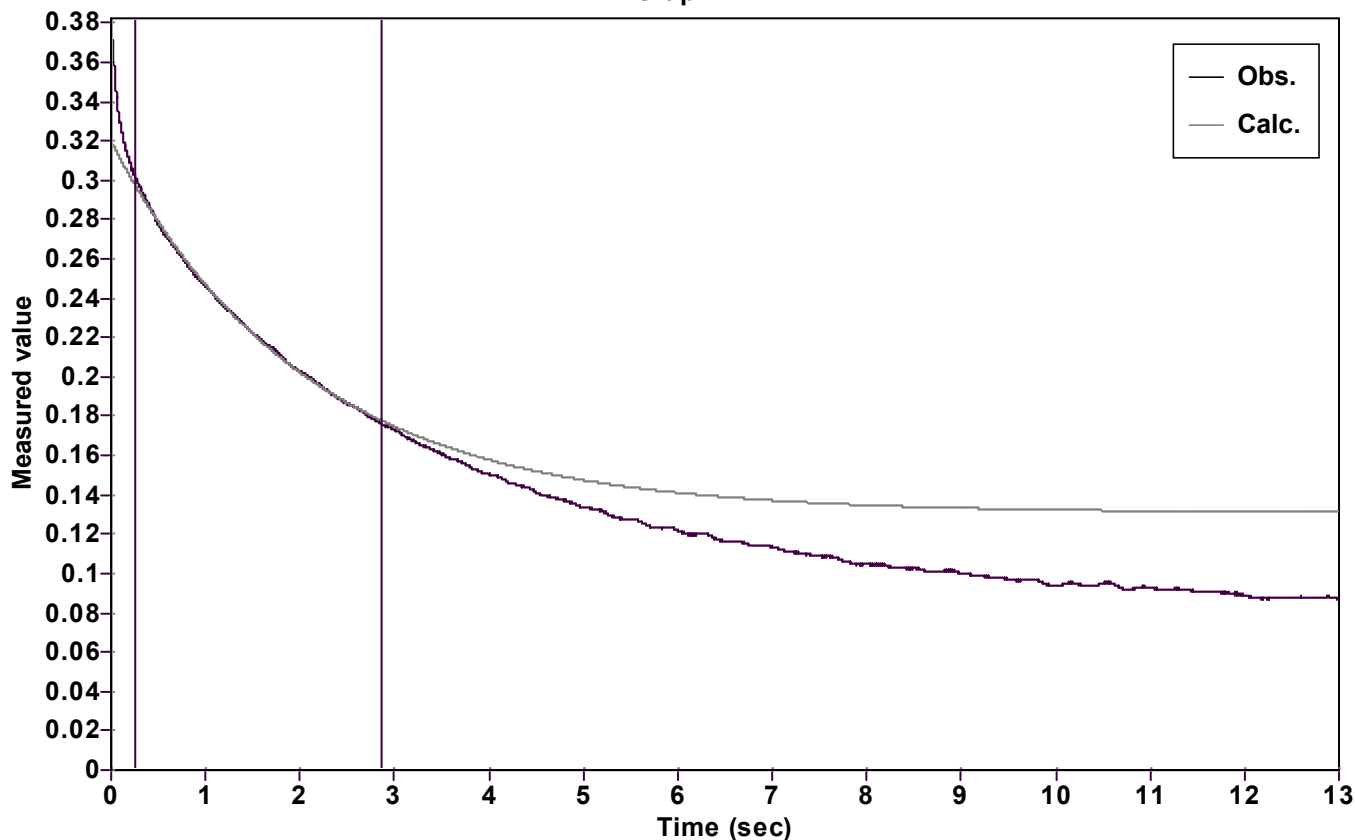


Evaluation of kinetic data with ExpoFit V 1.3

Graph



Function: $y = A \exp(-kx) + C$ (Exponential decrease)

Reference point: C (of function)

Amp A = 0.188683193768468 \pm 0.000320494191399

Quality $r^2 = 0.9990002016268$

Rate k = 0.486721693656632 \pm 0.002179687102365

Data points = 2006 of 10002

Final C = 0.130893887940661 \pm 0.000417325808714

Conversion = 49.9 %

Start at position: 0.2587 / 0.301552 (32.1 %)

End at position: 2.8652 / 0.175993 (82.1 %)

ExpoFit file: a118_50eq.exp

Date of file: 22.08.2022 17:00:30

Source file: a118_50eq.txt

Date of file: 06.12.2021 17:15:20

Type of source file: Universal ASCII - file data

2007 by Dr. Kempf

Date of print: 22.08.2022 17:00:33